

## GW316-CHP Low Profile Hexagonal Closed End Threaded Insert

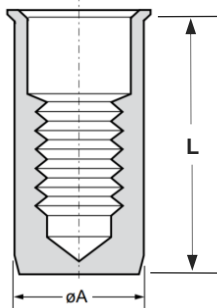
Stainless steel 316 · Low profile · Hexagonal · Closed end  
M4 - M12

### Features

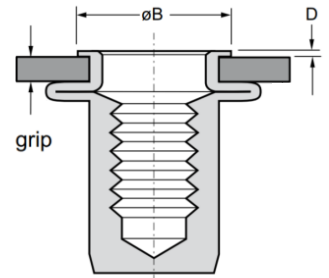
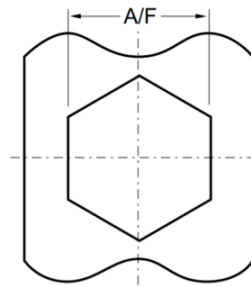
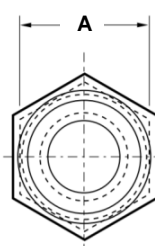
- Designed to provide load bearing threads in thin sheet materials
- Low profile head allows near flush fit to application
- Hexagonal section and bore improves torque-to-turn in components via form lock when compared to round and splined inserts
- Closed end prevents the ingress of dirt and fluids into thread and electrical circuits
- Extra high corrosion resistance

### Material

- Stainless steel 316



Before Placement



After Placement

Part No.	Thread Size	Grip Range		Hole Size A/F	A	øB	D	L
		min.	max.					
GW316-CHPM4-0520	M4	0.5	2.0	+0.1	-0.02/-0.15	-0.15 / +0.3	-0.05 / +0.3	±0.35
GW316-CHPM5-0530	M5	0.5	3.0	7.0	7.0	7.5	0.5	18.0
GW316-CHPM5-3050		3.0	5.0					
GW316-CHPM6-0530	M6	0.5	3.0	9.0	9.0	9.7	0.5	21.5
GW316-CHPM6-3050		3.0	5.0					
GW316-CHPM8-0530	M8	0.5	3.0	11.0	11.0	11.8	0.5	24.0
GW316-CHPM8-3055		3.0	5.5					
GW316-CHPM10-0835	M10	0.8	3.5	13.0	13.0	13.8	0.7	29.5
GW316-CHPM10-3560		3.5	6.0					
GW316-CHPM12-4070	M12	4.0	7.0	16.0	16.0	17.5	1.1	39.0

Thread Size	Max. torque	Pull-out	Torque-to-turn	Shear strength
	Nm max.	Kn	Nm	kN
M4	> ~7.1	> ~10.8	~6.0	~3.7
M5	~15.0	> ~15.5	> ~9.0	~4.8
M6	> ~23.0	~24.5	> ~22.0	~7.2
M8	> ~64.0	~39.0	~32.0	~9.4
M10	> ~70.0	~43.0	~50.0	~10.2
M12	> ~130.0	~70.0	~70.0	~14.6